

Hofgut Kaltenherberge 2014

Andreas
Hollmann
00491728521715
PSSHollmann@web.de
Course Designer (GER)

Prüfung Nr.: 1

Großer Preis

Spring-LP m. Stechen

Klasse: S**

Richtverf.: A
LPO § 501,B1
FEI RG / Art.
Höhe: 1,45 mtr.

Tempo: 350 m/Min.
Bahnlänge: 420 mtr.
Erlaubte Zeit: 72 sek.
Höchstzeit: 144 sek.

Hindernisse: 12
Sprünge: 15

1. Stechen über: **4a-5-1-2-14-10b-c-12**
Bahnlänge: 310 mtr.
Erlaubte Zeit: 54 sek.
Höchstzeit: 108 sek.

87x38

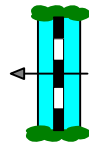
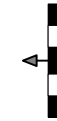
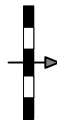
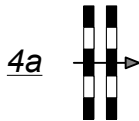
Eintritt / Ausritt

Start

4a

4b

1



8



7

10c



6



2



14

nur für Stechen



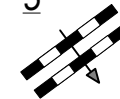
3



10b



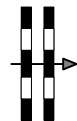
5



10a

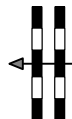


9

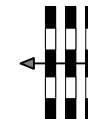


Ziel

12



11



Richter