

Hofgut Kaltenherberge 2014

Andreas
Hollmann
00491728521715
PSSHollmann@web.de
Course Designer (GER)

Prüfung Nr.: 3

Spring-LP m. Zeitwertung

Klasse: S*

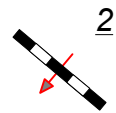
Richtverf.: A
LPO § 501,A1
FEI RG / Art.
Höhe: 1,40 mtr.

Tempo: 350 m/Min.
Bahnlänge: 430 mtr.
Erlaubte Zeit: 74 sek.
Höchstzeit: 148 sek.

Hindernisse: 12
Sprünge: 13

87x38

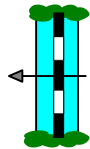
Eintritt / Austritt



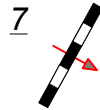
2



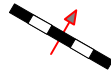
11



11



7



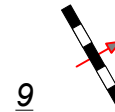
3



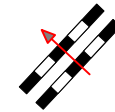
Richards Bank



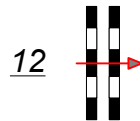
8



9

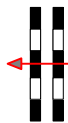


10



12

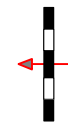
Ziel



6



5c



5b



5a

Richter